

# Welcome to The Hollies Residential Home



Providing care to the elderly for  
over 40 years

## Castle Cary High St and Museum



### About the Town

Castle Cary is a small attractive market town situated some 12 miles North East of Yeovil and 24 miles South of Bath. It lies on the edge of rolling countryside between the Somerset Levels to the West and the high ridgeline of Penselwood to the East and halfway between the Mendip Hills and the Blackmore Vale. One of the earliest recordings of settlement of the town go back to the Saxon charter of 725. After the Norman conquest, Cary was allocated to the prominent Norman baron Walter de Douai who made it the head of his barony and constructed the first castle along the foot of steep, grassy area commonly known as Lodge Hill. The castle is no longer there today but evidence of substantial earthworks remains at the rear of The George pub from which access may be had via footpath known as Paddock Drain.

### About the Home

The Hollies is situated in the beautiful historic market town of Castle Cary. Positioned conveniently in a quiet no through road yet only a minute walk to the bustling high st with all its local amenities. The Hollies dates back to the 18<sup>th</sup> century and still retains some of the original wooden beams and low ceilings. Since then it has undergone various extensions and has been a care home for over 40 years providing 24hr care for up-to 16 residents aged 65 and over.



The house has a unique homely feel and is run by M & J Care Homes Ltd; a company with great experience in providing high quality professional care, in a number of Care Homes in the South West. The company specialises in smaller homes that can offer a more intimate level of care than those offered by larger institutions.

## Staffing

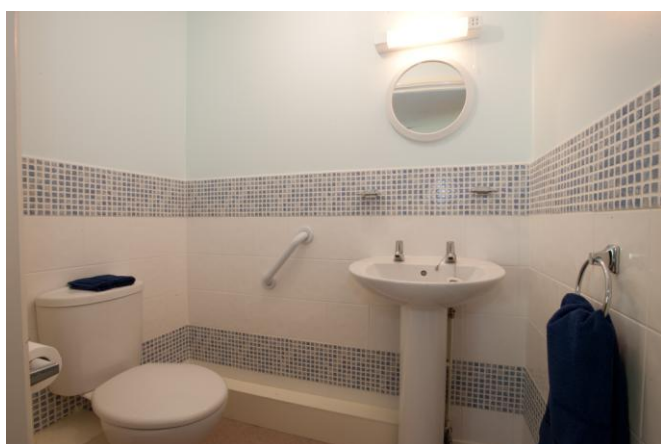


The dedicated and skilled staff focuses on and understands the needs of each resident with a care plan specifically written to reflect each individual's care needs and preferences. This plan is used to provide staff with information they require to meet all the needs of resident in supporting their physical, spiritual, intellectual, emotional and social needs which enables each person to live their lives with dignity and independence. We recognise that life in a communal setting and the need to accept help with personal tasks are inherently invasive of a resident's ability to enjoy the pleasure of being alone and undisturbed. We strive to retain as much privacy as possible for our residents. For this reason each room has its own lockable door, and (where safe to do so) each resident will have their own key. We take great care to respect privacy and dignity, and for example all of our staff is trained to knock and wait for an invitation to enter a resident's room and only to address a resident by their preferred title.

We are aware that the home's staff will always play a very important role in residents' welfare. Our staffing levels have been calculated taking into account current guidance from bodies such as the Dept. Of Health. We regularly review our staffing levels against the needs of our residents, to ensure that we continue to provide the high quality of care you have a right to expect. We aim to ensure that a high proportion of our staff are NVQ trained in Care

## Facilities

The Hollies has 16 bedrooms, 15 of which are for single occupancy and one for double with a large proportion having their own en-suites. Each person is encouraged to personalise their own bedroom with their furniture and belongings and is provided with a lockable door. The rooms are equipped with TV point 24 hour call bell system. Everyone can relax in anyone of three of our cosy attractive lounges that give a sense of intimacy and security. One of the lounges can be used by visiting relatives that need a more discreet place to converse with their loved ones. The conservatory looks out onto a well stock garden that has something in bloom most of the year round.







## Daily life, social activities, visits and consultation with you

Our activities co-ordinator provides a diverse programme of activities which encourage both mental and physical stimulation for each resident enabling them to enjoy life to the full. The home is attended by an experience stylist, a qualified chiropodist, and a range of complementary therapies can be arranged to suit individual requirements. Visitors are welcome at anytime and in addition all our facilities are extended to close friends and family. Animals or pets are encouraged





## Dining

Meals times are a very important part of life at The Hollies. Most of our food is sourced locally and provides a varied and balanced diet whilst also catering for those with special dietary needs such as diabetes and gluten allergy. Meals are prepared by our experienced chefs who are trained in food hygiene and we encourage friends and family to join us for refreshments or a meal.



## Accommodation breakdown

S = Standard 9-12M<sup>2</sup>

L = Large 12M<sup>2</sup> – 14 M<sup>2</sup>

XL = Very Large – greater than 14 M<sup>2</sup>

### Bedrooms

Room	1	2	3	4	5	6	7	8	9	10	12	14	15	16	17	18			
Size	S	S	S	S	S	XL	S	S	S	S	S	L	L	L	L	L			
En suite	N	N	N	N	N	Y	Y	N	N	N	N	Y	Y	Y	Y	Y			
Single/Double	S	S	S	S	S	D	S	S	S	S	S	S	S	S	S	S			

### Communal rooms

Room	Lounge 1	Lounge 2	Lounge 3	Dining 1	Dining 2
Size (sq m)	19.2	13.2	10.8	21.5	11.5

## Fees and Information

Our fees cover all meals, laundry and 24 hr care. Our home manager can provide full details about the terms and conditions of residents stay. We can make available are formal complaints procedure and provide our latest inspection report along with the Homes statement of purpose detailing the summary of services and facilities on offer.

### Contact info:

The Hollies  
Florida St  
Castle Cary  
Somerset  
BA7 7AE

Manager: Amanda Philips

Telephone: 01963 350709

E-Mail: [mandy.philips@tesco.net](mailto:mandy.philips@tesco.net)